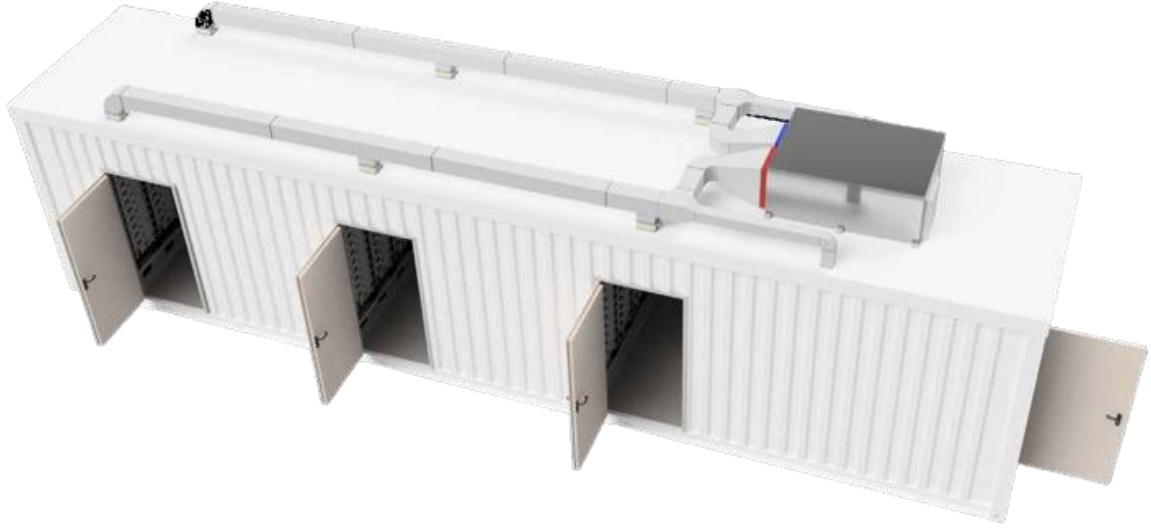




# PRIME

## PBSS 2.0 PBSS 3.0 Containerized Solution 660V

### Technical Datasheet



#### Safe & reliable

Lithium Nickel Manganese Cobalt Oxide Cell Tested and Certified Product



#### High Voltage Configuration

High Efficiency Rate



#### High Energy Density

135 kWh/m<sup>2</sup>



#### More Usable Energy

Up to 7 500 cycles



#### Perfect Compatibility

Compatible with Most PCS in the Market



#### Modular Concept

Connection up to 32 racks in parallel



#### Energy Management Available

Power Distribution Unit SCADA ready



#### Maintenance Free

Cost reduction



#### Decarbonization

Contributes to reduction of Carbon for a climate-neutral society by 2050



#### Eco friendly

Up to 98% Recyclable



# Technical specifications

Products	PBSS 2.0	PBSS 3.0
<b>Performance</b>		
Number of racks (parallel connection)	11	17
Installed energy	2 MWh	3 MWh
Output power (rated at 25°C)	0.5 MW / 1 MW / 2 MW	1 MW / 2 MW / 3 MW
Nominal voltage	660 V	
Operating voltage range	540 – 738 V	
Nominal capacity	3080 Ah	4760 Ah
Cycles (@80% DoD 0.5C/0.5C rated at 25°C)	>5500 cycles	
Efficiency	Up to 98%	
<b>Communication</b>		
Display	SOC indicator, status indicator	
Communication	TCP/IP, Modbus, CAN open	
Safety	Digital outputs for charger and inverter control	
<b>General specifications</b>		
Container type	20 ft	40 ft
Operating temperature	Discharge -10°C to +50°C / Charge 0°C to +50°	
Recommended operating temperature	+15°C to +30°C	
Cooling	Active Liquid / Air (battery modules), HVAC System	
Safety	Fire Suppression System	
Protection rating (battery module)	IP 21	
Cell technology	NMC – Lithium Nickel Manganese Cobalt Oxide (LiNiMnCoO <sub>2</sub> )	

## Applications

- ✓ Peak shaving/shifting
- ✓ Renewable integration
- ✓ Ancillary grid support
- ✓ Emergency power backup
- ✓ Energy Storage System for EV charging stations



Typical product configuration.  
Appearance and interfaces may vary.

We reserve the right to make technical changes and updates without prior notice. Specific values, performance data and other information in this data sheet, brochures and other product information, as well as illustrations and drawings in these documents, are solely illustrative and are subject to ongoing revision and modification.



**PRIME BATTERIES TECHNOLOGY**

+40 751 166 196

[andreea.zaharof@primebatteries.com](mailto:andreea.zaharof@primebatteries.com)

[www.primebatteries.com](http://www.primebatteries.com)

**Office & Factory**

4C Oxigenului St., Cernica

077035, Ilfov County, Romania